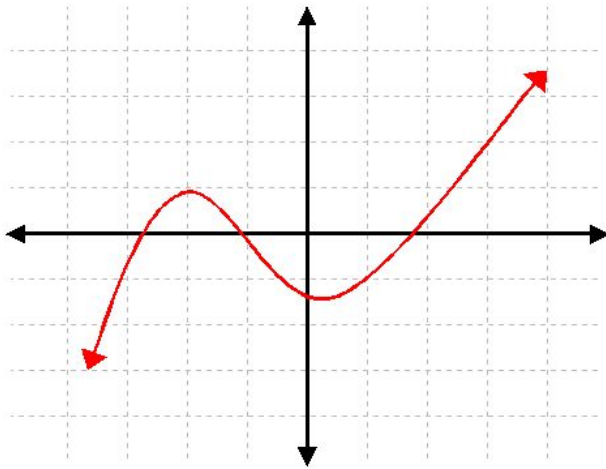


Monday:

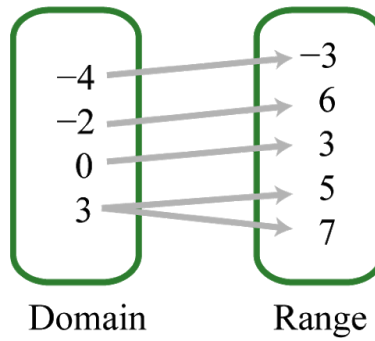
Are the following relations functions? **Explain why.**

1.

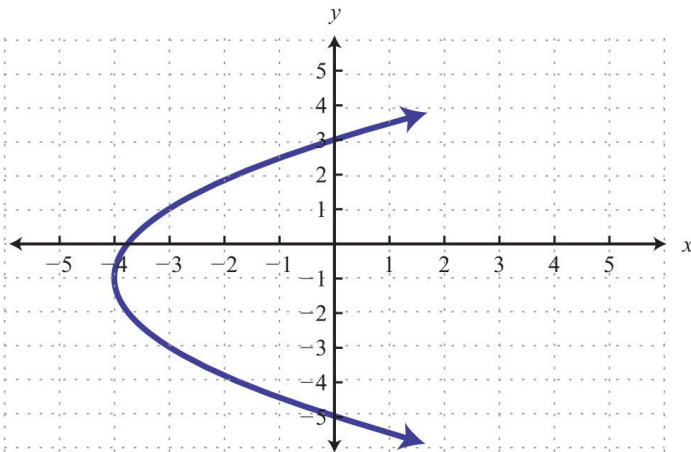


2.

Correspondence



3.



$x$	3	2	1	0	1	2	3
$y$	1	-2	2	4	-3	-2	-1

4.

Tuesday:

If  $f(x) = 2x - 4$  and  $g(x) = x^2 - 4x$ , find each value.

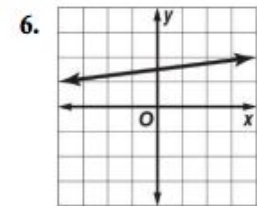
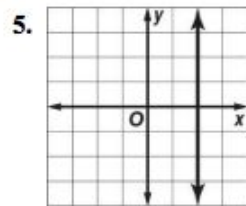
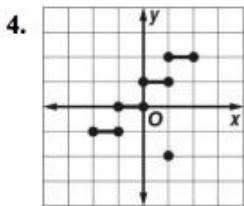
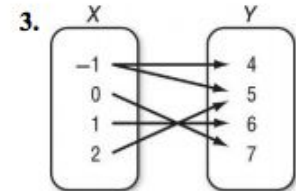
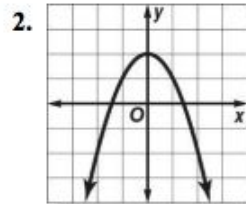
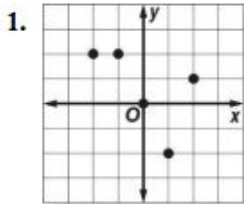
1.  $f(4)$

2.  $g(2)$

3.  $f(-5)$

Wednesday:

Determine whether each relation is a function.



Thursday:

No bell ringer - test day